

# THE QUIVIRA COALITION'S 9<sup>TH</sup> ANNUAL CONFERENCE

## ***THE CARBON RANCH: USING FOOD AND STEWARDSHIP TO BUILD SOIL AND FIGHT CLIMATE CHANGE***

Wednesday-Friday, November 10-12, 2010  
Albuquerque, New Mexico

Climate change is both a pressing issue and a tremendous opportunity. Right now, the only possibility of large-scale removal of greenhouse gases from the atmosphere is through plant photosynthesis and other land-based carbon sequestration activities. Strategies include enriching soil carbon, farming with perennials, employing climate-friendly livestock practices, conserving natural habitat, restoring degraded watersheds and rangelands, and producing local food. Many of these strategies have been demonstrated to be both practical and profitable. A *carbon ranch* bundles them into an economic whole with the aim of creating climate-friendly landscapes that are healthy ecologically and are the source of healthy food.

***During our three-day conference, we will hear from a variety of "carbon pioneers." Topics include practices that enrich soil carbon, strategies for monitoring carbon accrual, the role of grassfed food, watershed restoration and global case studies.***

### **Speakers:**

- Steve Apfelbaum, Applied Ecological Services
- Dr. Bill Chameides, Dean of the Nicholas School of the Environment, Duke University
- Abe Collins, New Soil Matrix
- Dr. Jeffrey Creque, agroecologist with the Marin Carbon Project
- Brock Dolman, Director of the Occidental Arts & Ecology Center
- Dr. Christine Jones, Founder of the Australian Soil Carbon Accreditation Scheme (Keynote)
- Greg Judy, rancher and 'mob-grazing' educator
- Dr. David Montgomery, geologist and author of *Dirt!: The Erosion of Civilizations*
- Jeff Moyer, Farm Director for the Rodale Institute, organic no-till
- Constance Neely, consultant for land, livelihoods and climate change
- Nancy Ranney, rancher, Ranney Grassfed Beef
- Sara Scheer, Ecoagriculture Partners
- John Wick, rancher and leader of the Marin Carbon Project
- A Young Agrarian Panel

*"More than 30% of all greenhouse gases arise from the land use sector. Thus, no strategy for mitigating global climate change can be complete or successful without reducing emissions from agriculture, forestry, and other land uses. Moreover...**improved land management could offset a quarter of global emissions from fossil fuel use in a year.** In contrast, solutions for reducing emissions by carbon capture in the energy sector are unlikely to be widely utilized for decades and do not remove the greenhouse gases already in the atmosphere." – from **Mitigating Climate Change Through Food and Land Use** by Sara Scheer and Sajal Sthapit (Worldwatch Report #179)*



**WEDNESDAY, NOVEMBER 10<sup>TH</sup>**

**PRE-CONFERENCE WORKSHOP:**  
**"Improving the Carbon Cycle on Your Land"**

Part 1: ***The Soil / Water Connection*** with Craig Sponholtz, Drylands Solutions, Inc., and Doug Weatherbee, Soil Doctor

Part 2: ***Mob-grazing*** with Greg Judy, rancher and mob-grazing educator

**EVENING EVENT: 7:00-9:00PM**

**"A History of Dirt"** by Dr. David Montgomery, University of Washington, Author of ***Dirt: The Erosion of Civilizations***

*"Grassland management can increase productivity and food security, provide development opportunities in resource-poor drylands and reduce impacts of drought and climate change. Well-managed grasslands provide other important benefits such as increased water infiltration and retention and improved nutrient cycling, associated with organic matter accumulation in the soil as well as increased growth, biomass and diversity of species." – from **Dryland Pastoral Systems and Climate Change** by Constance Neely and Sally Bunning (FAO Report, 2010)*

Registration online - [www.quiviracoalition.org](http://www.quiviracoalition.org)

**CONFERENCE EXHIBITORS:** Exhibitor table fees will be \$300 for all affiliations which includes one three-day conference registration. The Embassy Suites offers a bright, open space for everyone to view your display and visit. With over 500 attendees this is an affordable opportunity to reach your target audience.

**CONFERENCE SPONSORS:** Sponsorship of our 9th Annual Conference will help us: maintain affordable registration fees, spread the word to new and hard-to-reach groups in the region, offset expenses not covered by registration fees, increase attendance and organization membership, and keep The Quivira Coalition operating through the year. **We will be updating information as it becomes available! Stay posted through our website: [www.quiviracoalition.org](http://www.quiviracoalition.org)**



**“There is only one soil, one flora, one fauna, and one people, and hence only one conservation problem... economic and esthetic land uses can and must be integrated, usually on the same acre.” - Aldo Leopold**

Please consider becoming a sponsor. Our four sponsorship categories are: SOIL (\$500 - \$999), PLANTS (\$1000 - \$2499), ANIMALS (\$2500 - \$4999) and COMMUNITY (\$5000 +). Your sponsorship will be recognized in the following way....

**For a Soil or Plants Sponsorship up to \$2,499**, web link and/or logo listing on The Quivira Coalition home page, a one-year Quivira Coalition membership or renewal, name or logo on conference sponsor poster, and listing in the conference program.

**For an Animals Sponsorship of \$2,500 to \$4,999**, web link and/or logo listing on The Quivira Coalition home page, a one-year Quivira Coalition membership or renewal, name or logo on conference sponsor poster, listing in the conference program, and one conference registration packet that includes one pre-conference symposium registration, one conference registration and one banquet ticket.

**For a Community Sponsorship of \$5,000 and above**, web link and/or logo listing on The Quivira Coalition home page, a one-year Quivira Coalition membership or renewal, name or logo on conference sponsor poster, listing in the conference program, and two conference registration packets that include two pre-conference symposium registrations, two conference registrations and two banquet tickets.



**CONFERENCE ACCOMMODATIONS:** Our Annual Conference is being held at the Embassy Suites Hotel in Albuquerque, New Mexico, just five minutes from the airport. **A lovely two-room suite is priced at a special Quivira rate of \$125/night for double occupancy and includes a cooked-to-order breakfast buffet; an evening manager’s reception featuring cocktails, non-alcoholic beverages and light snacks; and complimentary parking.** A block of rooms has been reserved for November 9-12, 2010.

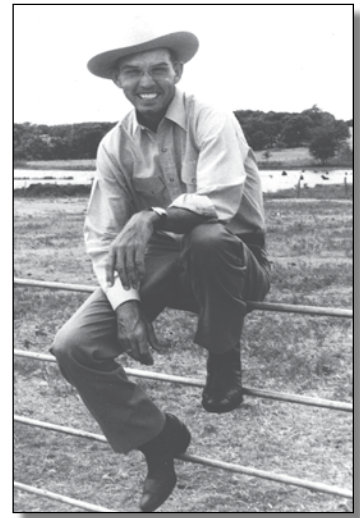
# \$20,000 Clarence Burch **AWARD**

## Call For Nominations

The Clarence Burch Award is given by The Quivira Coalition and the Dunigan Family to honor Clarence Burch, an innovative and enterprising rancher who courageously embraced new ideas and methods of “doing business.” The award recognizes individuals, organizations and others who have led by example in promoting and accomplishing outstanding stewardship of private and/or public lands.

The goals of the Burch Award are consistent with the mission of The Quivira Coalition and its New Ranch paradigm, i.e., to explore innovative ideas in land management and build bridges between environmentalists, public and private land managers, scientists and others with the goal of restoring western rangelands collaboratively.

The Quivira Coalition seeks nominations for its 9th Annual Burch Award, which will be presented at a dinner ceremony Friday evening, November 12, 2010, at the conclusion of the 9th Annual Conference at the Embassy Suites, Albuquerque, New Mexico.



Clarence Burch

### ***Criteria include:***

Individuals or organizations who:

- ▶ demonstrate innovative and sustainable methods of land stewardship,
- ▶ contribute significantly to education about sustainable use of natural resources, and
- ▶ promote and implement the collaborative process, sometimes called The Radical Center, in resolving land stewardship conflicts.

Individuals or organizations within:

- ▶ our public lands agencies who take the lead in implementing new ideas in resource management,
- ▶ the research community who have made a significant contribution to a wider understanding of the ecological and social factors at work on the land, or
- ▶ the conservation and ranching community who have demonstrated proactive leadership in promoting and achieving ecological and economic health.

Please send a 1 to 2 page nomination letter that includes:

1. the name of the individual, group or organization,
2. contact information for the nominee,
3. current and past accomplishments,
4. why this person or organization should receive this award and
5. additional letters of support are highly encouraged.

### **Deadline for nominations is *August 1, 2010.***

Please return nomination by e-mail by to Catherine Baca at [cbaca@quiviracoalition.org](mailto:cbaca@quiviracoalition.org).

For more information call Catherine Baca at 505-820-2544, ext. 2#.

For previous winners, visit our website at [www.quiviracoalition.org](http://www.quiviracoalition.org) and follow the Annual Conference link.