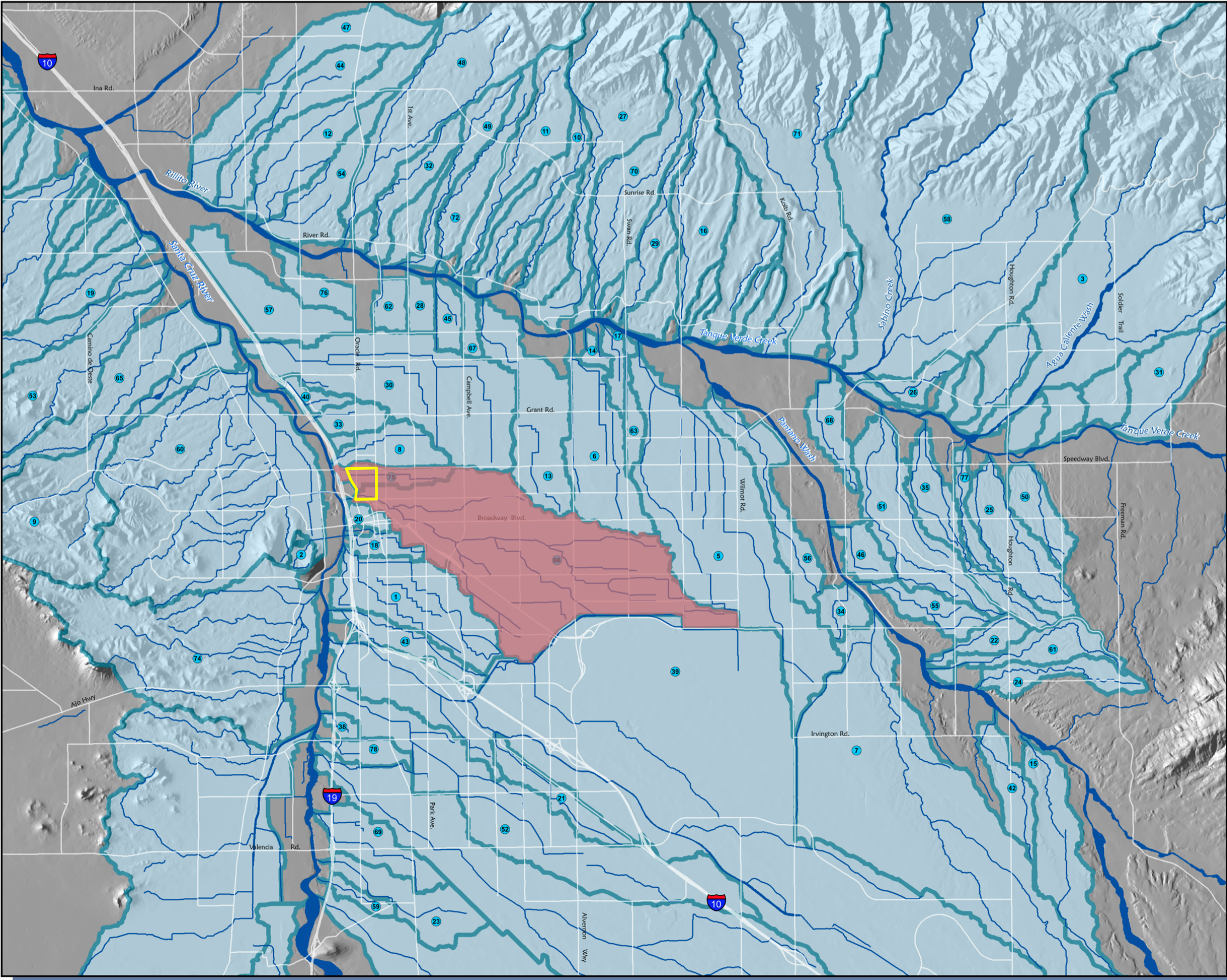


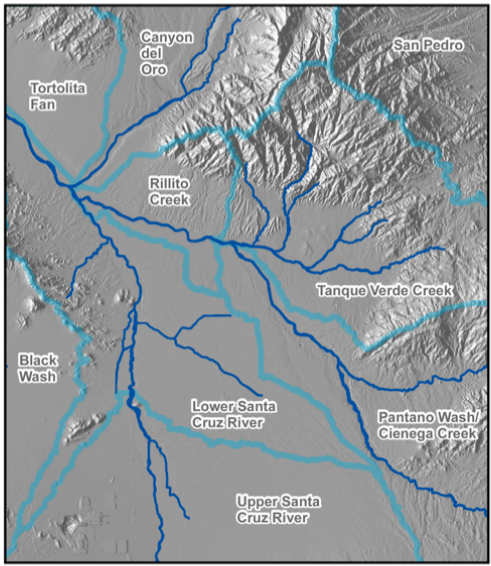
The Dunbar/Spring Neighborhood Washes & Their Watersheds*



*shaded red on map & in list
Named Tucson Basin Watersheds

- | | | |
|---------------------------|----------------------------------|----------------------------------|
| 1. 18th Street Wash | 27. Finger Rock Wash | 53. Roger Wash |
| 2. A Mtn Detention | 28. First Avenue Wash | 54. Roller Coaster Wash |
| 3. Agua Caliente | 29. Fletcher Caida Wash | 55. Rolling Hills Wash |
| 4. Airport Wash | 30. Flowing Wells Wash | 56. Rose Hill Wash |
| 5. Alamo Wash | 31. Fortyniners Wash | 57. Ruthrauff Wash |
| 6. Alverson Wash | 32. Friendly Village Wash | 58. Sabino Creek |
| 7. Atterbury Wash | 33. Grant Road Wash | 59. Santa Clara Wash |
| 8. Bronx Wash | 34. Guillermo Wash | 60. Silvercreek Wash |
| 9. Camino de Oeste Wash | 35. Hidden Hills Wash | 61. Spanish Trail Wash |
| 10. Camino Real Wash | 36. Hughes Wash | 62. Stone Avenue Wash |
| 11. Campbell Wash | 37. Idle Hour Wash | 63. Swan Road Wash |
| 12. Casas Adobes Wash | 38. Irvington (Michigan) Wash | 64. Sweetwater Wash |
| 13. Christmas Wash | 39. Julian Wash | 65. Trails End Wash |
| 14. Christopher City Wash | 40. Kreuger Wash | 66. Tucson Arroyo |
| 15. Civano Wash | 41. Los Reales Diversion Channel | 67. Tucson General Wash |
| 16. Craycroft Wash | 42. Mesquite Ranch Wash | 68. Udall Park Wash |
| 17. Creekside Wash | 43. Mission View Wash | 69. Valencia Wash |
| 18. Cushing Street Wash | 44. Nanini Wash | 70. Valley View Wash |
| 19. Del Cerro Wash | 45. North Mountain Ave. Wash | 71. Ventana Canyon Wash |
| 20. Downtown Watershed | 46. Owen Park Wash | 72. Villa Entrada Wash |
| 21. Earp Wash | 47. Pegler Wash | 73. WBSR Diversion Channel |
| 22. Eastview Wash | 48. Pima Wash | 74. West Branch Santa Cruz River |
| 23. El Vado Wash | 49. Race Track Wash | 75. West University Wash |
| 24. Escalante Wash | 50. Reyes Wash | 76. Wetmore Wash |
| 25. Este Wash | 51. Robb Wash | 77. Wrightstown Wash |
| 26. Fahringer Wash | 52. Rodeo Wash | 78. Wyoming Wash |

Pima County Watersheds



Arizona Watersheds



TerraSystems Southwest and the Watershed Management Group, Inc. would like to thank Pima County Department of Transportation Geographic Information Services Division and the City of Tucson Department of Transportation for graciously providing the datasets displayed on this map. The Hydrologic Unit Code (HUC) data, aggregated to subregions, was provided by the USDA-NRCS National Cartography and Geospatial Center. All data is accepted as-is, with all known and unknown inaccuracies and/or errors, and without warranty of any kind.



0 0.5 1 2 3 4 Miles

Map Date: March 23, 2009

Major Streets

Named Washes

Major Watersheds



TERRASYSTEMS SOUTHWEST, INC.
Geographic Information Systems Solutions
7315 N. Oracle Rd., Suite 207 • Tucson, Arizona 85704
(520) 322-0234 • www.terrasystems.com

Watershed Management Group

West University Boulevard to around 11th Ave is the ridgeline boundary between the two watersheds within our neighborhood.

These watersheds reach beyond our neighborhood (*outlined above in yellow*), inviting us to do the same.

A watershed is "that area of land, a bounded hydrological system, within which all living things are inextricably linked by their common water course and where, as humans settled, simple logic demanded that they become part of a community."

—John Wesley Powell

To learn how to turn these *watersheds* into more-regenerative water *catchments*, visit HarvestingRainwater.com

To download this and other Tucson community watershed maps, visit WatershedMG.org